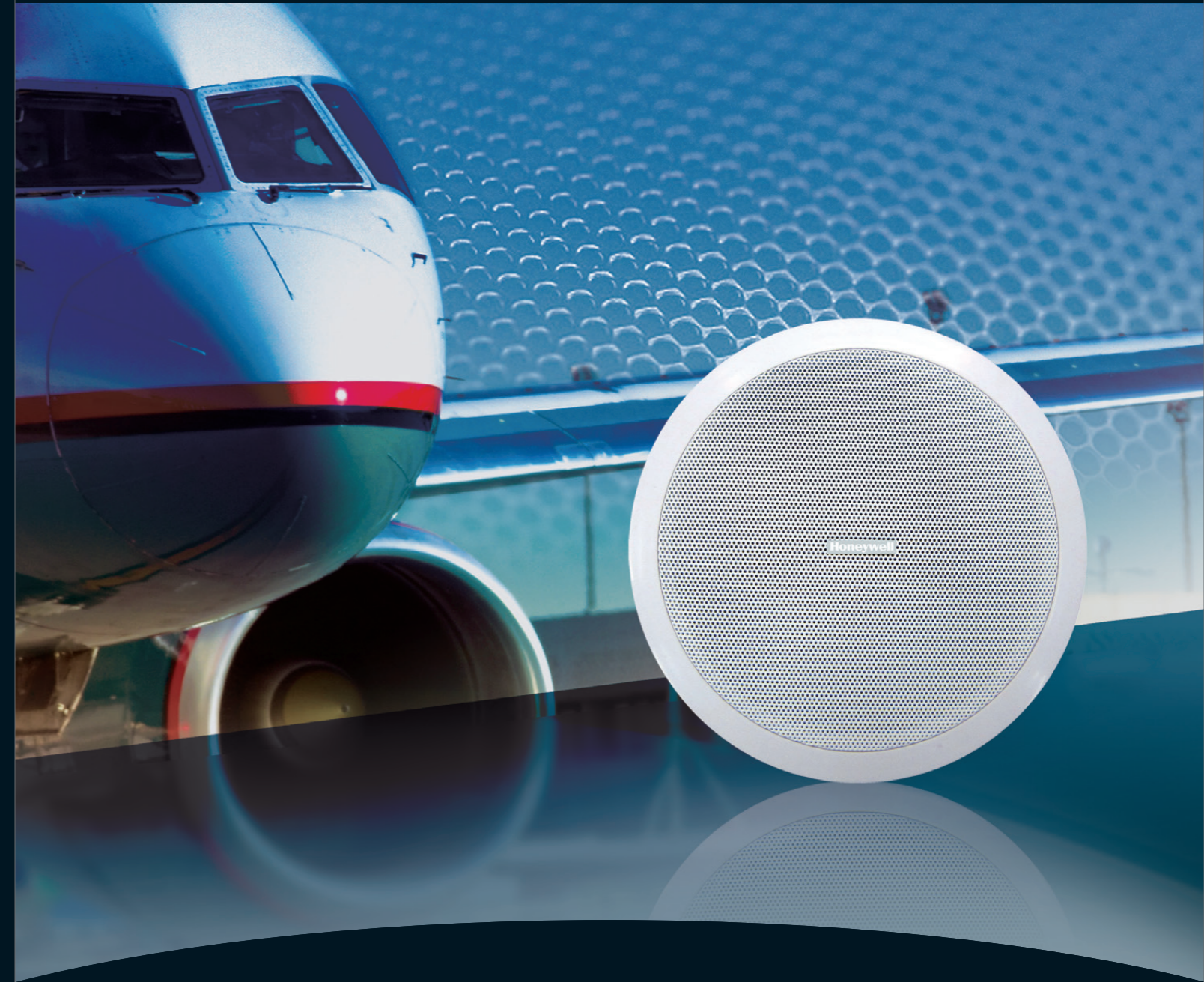


Honeywell Audiovisuals is a strategic business unit of Honeywell Life Safety under global Fortune 500 Honeywell International Inc. Honeywell Audiovisuals is specialized in designing, developing, manufacturing and selling public address and voice alarm systems. Being an expert in acoustic excellence, our mission statement is to provide our customers who need sound and voice propagation a better, safer, and a more efficient public address management system and solution.

As a global leading manufacturer, Honeywell Audiovisuals is always in pursuit of innovations and driven by the most cutting edge technologies. With an experienced team of R&D elites working in world-class laboratories, Honeywell Audiovisuals implements the most efficient operation and strictest quality control system in the industry. Our advanced design concepts focus on networkability, modularization, and user-friendliness. "Empower the Sound" is our promise to create a greater value to our customers around the world.



Extend Leadership into Acoustic Excellence

High Quality Loudspeakers for
Public Address and Voice Alarm Systems



Subject to change without notice
LEADWAYSPK_V4.2_EN
Oct, 2014
© 2014 Honeywell International Inc.

01 Ceiling Loudspeaker



L-PCP06C

6.5" ABS Moisture-proof Ceiling Loudspeaker

- Clear and intelligible audio performance
- Stylish and unobtrusive design
- Simple power setting
- Flush-mounting system for fast and easy installation
- Complies with IP54 standard with great water-proof ability
- CE and RoHS compliant

SPECIFICATIONS	L-PCP06C
Max power	9W
Rated power	6W
Power taps @ 100V	6W / 3W / 1.5W
Power taps @ 70V	3W / 1.5W / 0.75W
SPL at 6W/1W (100Hz - 15kHz, 1m)	99dB / 93dB
Frequency range (-10dB)	80Hz - 16kHz
Dispersion angle (1KHz/-6dB)	150°
Rated input voltage	100V / 70V
Rated impedance	1.7KΩ / 3.3KΩ / 6.7KΩ
Connection	Plastic terminal blocks
Dimensions (Ø x H)	Φ188 x 75mm
Hole cut-out size	Φ170mm
Diameter of speaker	6.5"
Weight	0.77kg
Color	White (RAL 9003)
Material	ABS
IP Rating	IP54

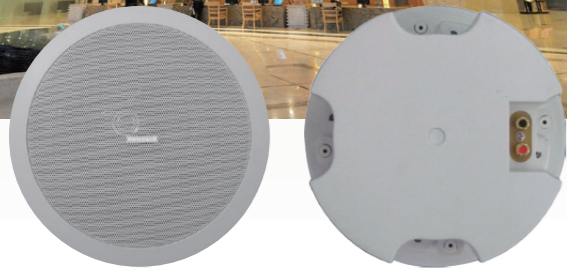


L-PCP20A

5" ABS Coaxial Ceiling Loudspeaker with ABS Dome

- Coaxial design ensures wider frequency response range
- Flawless acoustic performance
- Selectable 8 ohms, 70V and 100V inputs
- Easy connection and installation
- High strength and fire proof ABS enclosure
- CE and RoHS compliant

SPECIFICATIONS	L-PCP20A
Max power	30W
Rated power	20W
Power taps @ 100V	20W / 10W
Power taps @ 70V	10W / 5W
SPL at 20W/1W (150Hz - 20kHz, 1m)	102dB / 90dB
Frequency range (-10dB)	100Hz - 20kHz
Dispersion angle (1KHz/-6dB)	120°
Rated input voltage	100V / 70V
Rated impedance	500Ω / 1KΩ
Connection	Binding Post Terminals
Dimensions (Ø x H)	Φ240mm x 151mm
Hole cut-out size	Φ210mm
Diameter of speaker	5.5"
Weight	2kg
Color	White (RAL 9003)
Material	ABS



L-PCM06A

5" Metal Ceiling Loudspeaker

- Optimal audio performance with dual-cone speakers
- Cone with gasket and damping affect for longer operating life
- Time tested metal grille with hardware free appearance
- Higher sensitivity
- Impressive anti-crash and anti-rusting performance
- CE and RoHS compliant



SPECIFICATIONS	L-PCM06A
Max power	9W
Rated power	6W
Power taps @ 100V	6W / 3W / 1.5W
Power taps @ 70V	3W / 1.5W / 0.75W
SPL at 6W/1W (150Hz - 20kHz, 1m)	96dB / 90dB
Frequency range (-10dB)	120Hz - 20kHz
Dispersion angle (1KHz/-6dB)	160°
Rated input voltage	100V / 70V
Rated impedance	1.7KΩ / 3.3KΩ / 6.7KΩ
Connection	Plastic terminal blocks
Dimensions (Ø x H)	Φ180mm x 55mm
Hole cut-out size	Φ150mm
Diameter of speaker	5"
Weight	0.7 kg
Color	White (RAL 9003)
Material	Iron



SPECIFICATIONS **L-PCM06B**

Max power	9W
Rated power	6W
Power taps @ 100V	6W / 3W / 1.5W
Power taps @ 70V	3W / 1.5W / 0.75W
SPL at 6W/1W (150Hz - 20kHz, 1m)	100dB / 92dB
Frequency range (-10dB)	110Hz - 20kHz
Dispersion angle (1KHz/-6dB)	180°
Rated input voltage	100V / 70V
Rated impedance	1.7KΩ / 3.3KΩ / 6.7KΩ
Connection	Push-in terminal blocks
Dimensions (Ø x H)	Φ200 x 100mm
Hole cut-out size	175mm
Diameter of speaker	6.5"
Weight	1.08kg
Color	White (RAL 9003)
Material	Iron

L-PCM06B

6.5" Metal Ceiling Loudspeaker with Metal Dome

- Clear and stereo audio performance
- Cone edge with damp glue for longer operation life
- Sturdy press fit metal grille appearance
- Simple power setting
- Flush-mounting system for fast and easy installation
- CE and RoHS compliant

