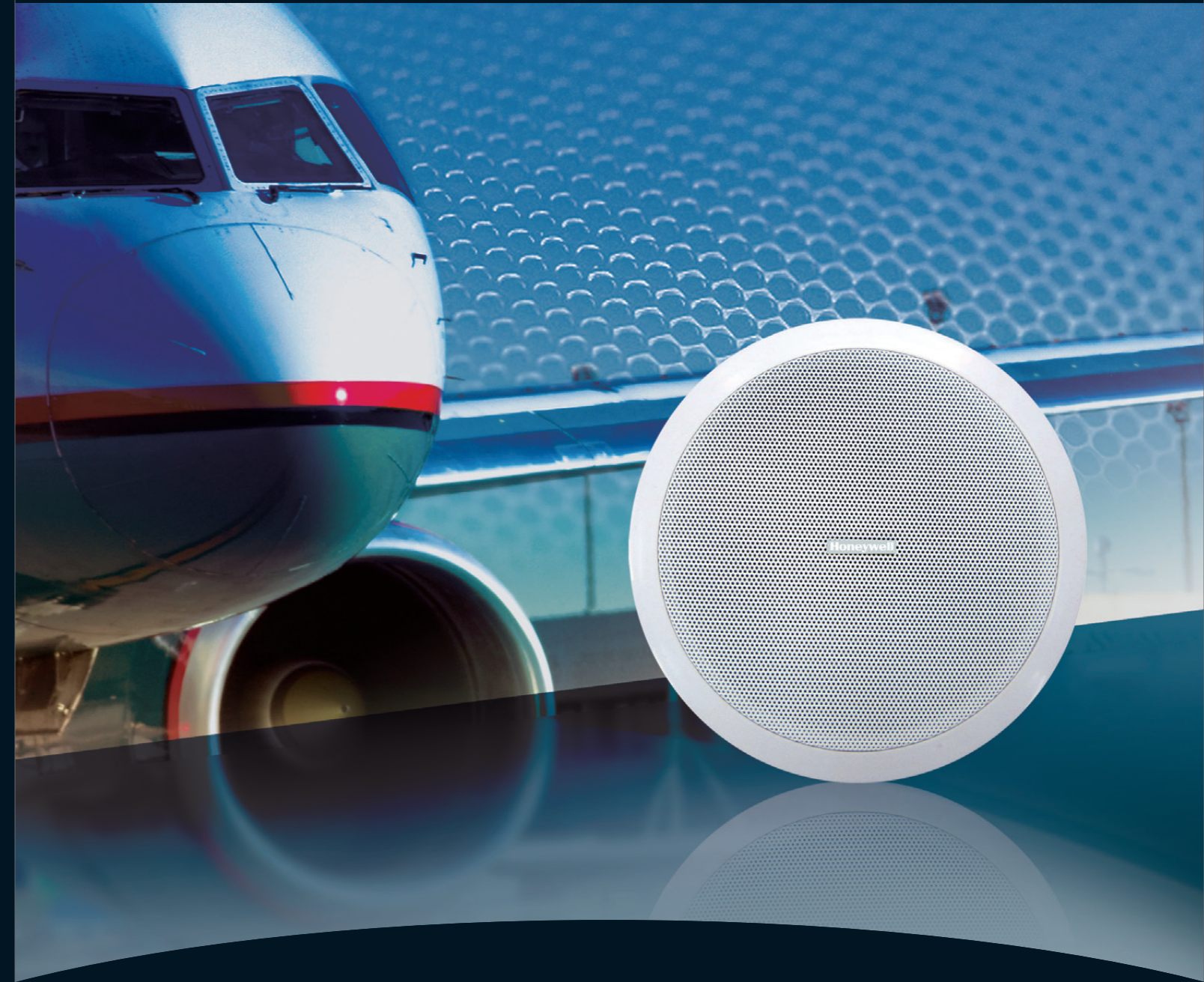


Honeywell Audiovisuals is a strategic business unit of Honeywell Life Safety under global Fortune 500 Honeywell International Inc. Honeywell Audiovisuals is specialized in designing, developing, manufacturing and selling public address and voice alarm systems. Being an expert in acoustic excellence, our mission statement is to provide our customers who need sound and voice propagation a better, safer, and a more efficient public address management system and solution.

As a global leading manufacturer, Honeywell Audiovisuals is always in pursuit of innovations and driven by the most cutting edge technologies. With an experienced team of R&D elites working in world-class laboratories, Honeywell Audiovisuals implements the most efficient operation and strictest quality control system in the industry. Our advanced design concepts focus on networkability, modularization, and user-friendliness. "Empower the Sound" is our promise to create a greater value to our customers around the world.



Extend Leadership into Acoustic Excellence

High Quality Loudspeakers for
Public Address and Voice Alarm Systems



01 Ceiling Loudspeaker



LM2-PCP06x ABS Modular Ceiling Loudspeaker Family

- Superior voice and music reproduction
- Stylish design
- Easy for installation
- Excellent moisture-proof ability, complying to IP54 and IP55 Standard(LM2-PCP06C)
- Optional back dome LM2-PM for choice
- Optional metal bracket LM2-MHA for suspended installation
- Comply with CE and RoHS standard



SPECIFICATIONS	LM2-PCP06A	LM2-PCP06B	LM2-PCP06C	LM2-PM
Max power	9W	9W	9W	
Rated power	6W	6W	6W	
Power taps @ 100V	6W / 3W / 1.5W	6W / 3W / 1.5W	6W / 3W / 1.5W	
Power taps @ 70V	3W / 1.5W / 0.75W	3W / 1.5W / 0.75W	3W / 1.5W / 0.75W	
SPL at 6W/1W	100dB / 92dB(120Hz-18KHz,1m)	100dB / 92dB(120Hz-18KHz,1m)	97dB / 89dB(150Hz-18kHz,1m)	
Frequency range (-10dB)	80Hz - 20kHz	80Hz - 20kHz	110Hz - 20kHz	
Dispersion angle(1kHz/4kHz,6dB)	184° / 90°	184° / 90°	184° / 90°	
Rated input voltage	100V / 70V	100V / 70V	100V / 70V	
Rated impedance	1.7KΩ / 3.3KΩ / 6.7KΩ	1.7KΩ / 3.3KΩ / 6.7KΩ	1.7KΩ / 3.3KΩ / 6.7KΩ	
Connection	4-pole screw plastic block	4-pole screw plastic block	4-pole screw plastic block	
Dimensions(Ø x H)	Ø180mm x 73mm	Ø180mm x 105mm	Ø180mm x 73mm	Ø139 mm x 100mm
Hole cut-out size	Ø160mm+5mm	Ø160mm+5mm	Ø160mm+5mm	
Diameter of speaker	5"	5"	5"	
Weight	0.64kg	0.76kg	0.64kg	0.12 kg
Color	White (RAL 9003)	White (RAL 9003)	White (RAL 9003)	White (RAL 9003)
Material	ABS	ABS	ABS	ABS
Material of dome	No	ABS	No	

* LM2-PCP06C complies with IP 54 standard, and complies with IP 55 when tested with LM2-PM



02

Cabinet Loudspeaker

Multi-purpose cabinet loudspeaker, lucid in treble while powerful in bass, delivering superb sounds effects is ideal for general indoor applications.

