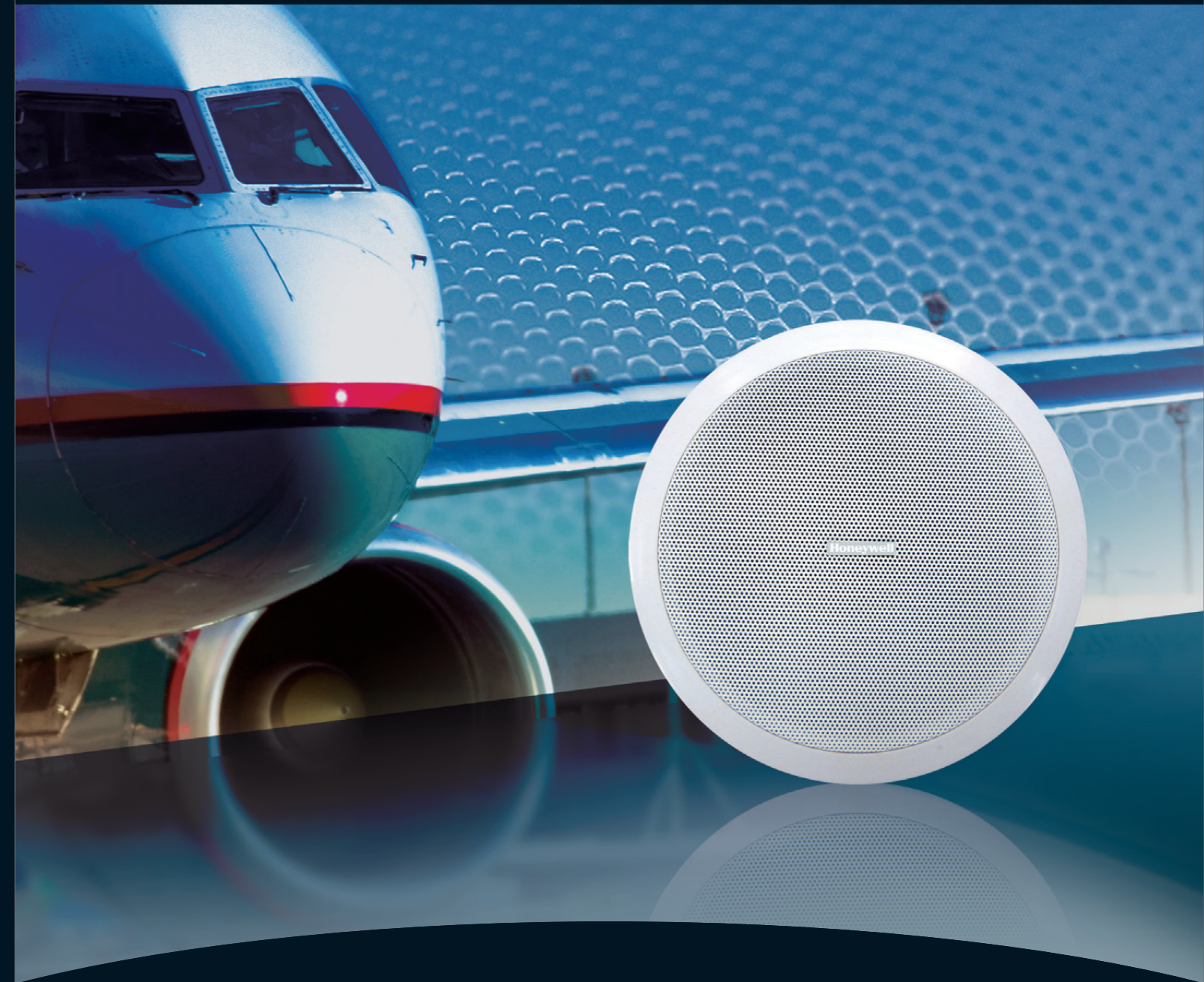


**Honeywell Audiovisuals** is a strategic business unit of Honeywell Life Safety under global Fortune 500 Honeywell International Inc. Honeywell Audiovisuals is specialized in designing, developing, manufacturing and selling public address and voice alarm systems. Being an expert in acoustic excellence, our mission statement is to provide our customers who need sound and voice propagation a better, safer, and a more efficient public address management system and solution.

As a global leading manufacturer, Honeywell Audiovisuals is always in pursuit of innovations and driven by the most cutting edge technologies. With an experienced team of R&D elites working in world-class laboratories, Honeywell Audiovisuals implements the most efficient operation and strictest quality control system in the industry. Our advanced design concepts focus on networkability, modularization, and user-friendliness. "Empower the Sound" is our promise to create a greater value to our customers around the world.



## Extend Leadership into Acoustic Excellence

High Quality Loudspeakers for  
Public Address and Voice Alarm Systems





## 02 Cabinet Loudspeaker

### L-PWP40A/L-PWP40B L-PWP60A/L-PWP60B L-PWP80A/L-PWP80B

#### ABS Full Range Cabinet

- High quality sounds effect, lucid in treble powerful in bass
- Delicate and strong ABS enclosure
- Mounting brackets available
- In a choice of charcoal and white
- Selectable 8 ohms, 70V and 100V inputs
- CE and RoHS compliant



| SPECIFICATIONS               | L-PWP40A/L-PWP40B   | L-PWP60A/L-PWP60B   | L-PWP80A/L-PWP80B   |
|------------------------------|---|---|---|
| Max power                    | 60W   | 80W   | 100W  |
| Rated power                  | 40W   | 60W   | 80W   |
| Power taps @ 100V            | 40W / 20W / 10W   | 60W / 30W / 15W   | 80W / 40W / 20W   |
| Power taps @ 70V             | 20W / 10W / 5W  | 30W / 15W / 7.5W  | 40W / 20W / 10W   |
| SPL                          | 99dB / 84dB (40W/1W, 130Hz-20kHz, 1m)                         | 108dB / 90dB (60W/1W, 100Hz-20kHz, 1m)                        | 109dB / 92dB (80W/1W, 80Hz-20kHz, 1m)                         |
| Frequency range (-10dB)      | 100Hz - 20kHz   | 80Hz - 20kHz  | 60Hz - 20kHz  |
| Dispersion angle (1KHz/-6dB) | 160°  | 135°  | 115°  |
| Rated input voltage          | 100V / 70V / 8Ω   | 100V / 70V / 8Ω   | 100V / 70V / 8Ω   |
| Rated impedance              | 250Ω / 500Ω / 1KΩ   | 167Ω / 333Ω / 667Ω  | 125Ω / 250Ω / 500Ω  |
| Connection                   | Binding Post Terminals  | Binding Post Terminals  | Binding Post Terminals  |
| Dimensions (W x H x D)       | 172 x 302 x 165mm   | 193 x 344 x 202mm   | 275 x 455 x 261mm   |
| Diameter of speaker          | 5" woofer, 1" tweeter   | 6.5" woofer, 1" tweeter                                       | 8" woofer, 1" tweeter   |
| Weight                       | 3.2kg   | 3.8kg   | 7.5kg   |
| Color                        | White (RAL 9003) (L-PWP40A)<br>Charcoal (RAL 7021) (L-PWP40B) | White (RAL 9003) (L-PWP60A)<br>Charcoal (RAL 7021) (L-PWP60B) | White (RAL 9003) (L-PWP80A)<br>Charcoal (RAL 7021) (L-PWP80B) |
| Material                     | ABS   | ABS   | ABS   |

### L-PWP10A

#### ABS Cabinet Loudspeaker

- Multi-cone speaker with powerful and lucid audio performance
- High-impact and fire proof ABS material
- Stylish design
- Easy installation and cost effective
- CE and RoHS compliant



| SPECIFICATIONS                    | L-PWP10A               |
|-----------------------------------|------------------------|
| Max power                         | 15W                    |
| Rated power                       | 10W                    |
| Power taps @ 100V                 | 10W / 5W               |
| Power taps @ 70V                  | 5W / 2.5W              |
| SPL at 10W/1W (200Hz - 15kHz, 1m) | 101dB / 92dB           |
| Frequency range (-10dB)           | 150Hz - 17KHz          |
| Dispersion angle (1KHz/-6dB)      | 170°                   |
| Rated input voltage               | 100V / 70V             |
| Rated impedance                   | 1KΩ / 2KΩ              |
| Connection                        | Push-in terminal block |
| Dimensions (W x H x D)            | 240 x 345 x 100mm      |
| Diameter of speaker               | 6.5"                   |
| Weight                            | 1.6kg                  |
| Color                             | White (RAL 9010)       |
| Material                          | ABS                    |



### L-PWP06A

#### ABS Cabinet Loudspeaker

- Superb audio and music reproduction
- High-impact ABS cabinet
- Simple power setting
- Flush mounting in ceiling, wall and furniture
- CE and RoHS compliant

| SPECIFICATIONS                   | L-PWP06A         |
|----------------------------------|------------------|
| Max power                        | 9W               |
| Rated power                      | 6W               |
| Power taps @ 100V                | 6W / 3W          |
| Power taps @ 70V                 | 3W / 1.5W        |
| SPL at 6W/1W (250Hz - 20kHz, 1m) | 96dB / 90dB      |
| Frequency range (-10dB)          | 200Hz - 20kHz    |
| Dispersion angle (1KHz/-6dB)     | 120°             |
| Rated input voltage              | 100V / 70V       |
| Rated impedance                  | 1.7KΩ / 3.3KΩ    |
| Connection                       | Cable            |
| Dimensions (W x H x D)           | 260 x 162 x 77mm |
| Diameter of speaker              | 5.5"             |
| Weight                           | 1kg              |
| Color                            | White (RAL 9010) |
| Material                         | ABS              |

