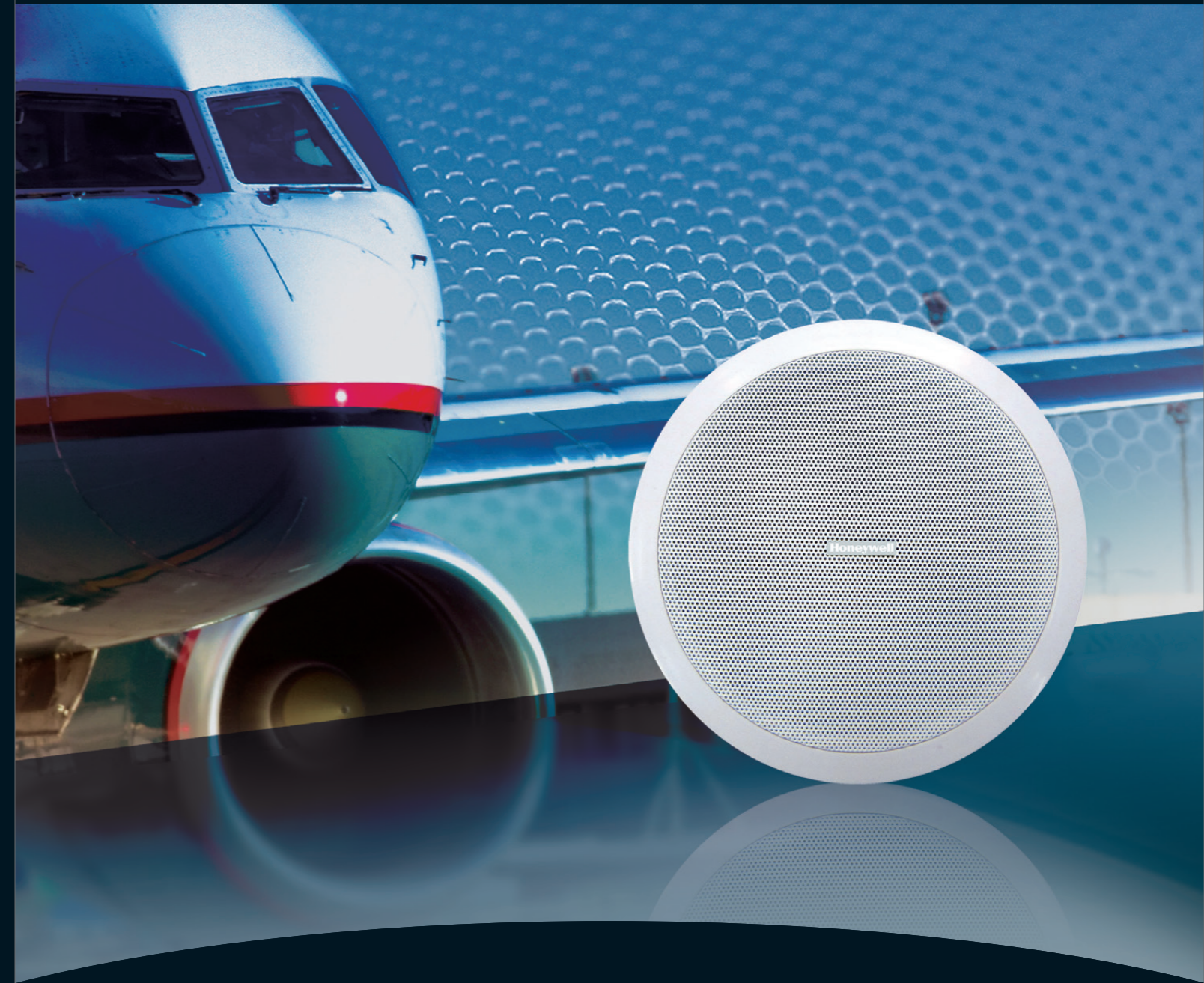


**Honeywell Audiovisuals** is a strategic business unit of Honeywell Life Safety under global Fortune 500 Honeywell International Inc. Honeywell Audiovisuals is specialized in designing, developing, manufacturing and selling public address and voice alarm systems. Being an expert in acoustic excellence, our mission statement is to provide our customers who need sound and voice propagation a better, safer, and a more efficient public address management system and solution.

As a global leading manufacturer, Honeywell Audiovisuals is always in pursuit of innovations and driven by the most cutting edge technologies. With an experienced team of R&D elites working in world-class laboratories, Honeywell Audiovisuals implements the most efficient operation and strictest quality control system in the industry. Our advanced design concepts focus on networkability, modularization, and user-friendliness. "Empower the Sound" is our promise to create a greater value to our customers around the world.



## Extend Leadership into Acoustic Excellence

High Quality Loudspeakers for  
Public Address and Voice Alarm Systems





## 03 Horn Loudspeaker

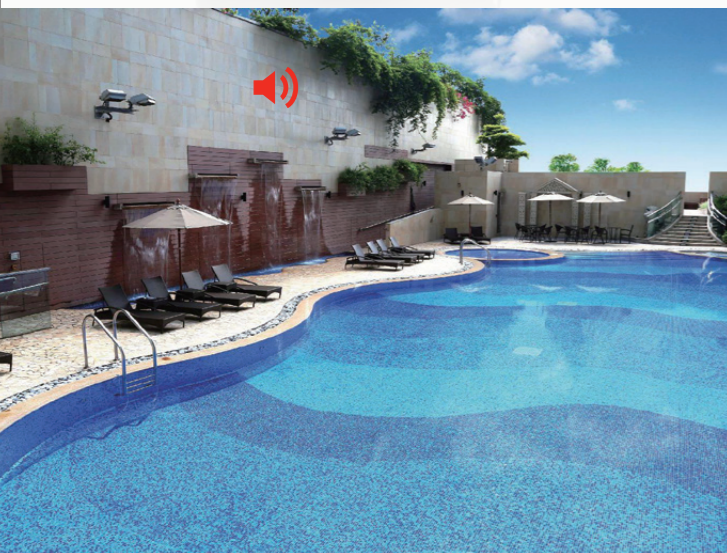


### **L-PHP30A**

#### ABS Horn Loudspeaker

- High impact fire-proof ABS material
- Excellent audio performance and music reproduction
- Antirust and chemical resistant
- CE and RoHS compliant

SPECIFICATIONS	L-PHP30A
Max power	45W
Rated power	30W
Power taps @ 100V	30W / 15W
Power taps @ 70V	15W / 7.5W
SPL at 30W/1W (330Hz - 8kHz, 1m)	116dB / 104dB
Frequency response (-10dB)	300Hz - 10kHz
Dispersion angle (1KHz/6dB)	140°
Rated input voltage	100V / 70V
Rated impedance	333Ω / 667Ω
Connection	Flexible wire
Dimensions	285 x 205 x 290mm
Weight	2.1kg
Color	White (RAL 9003)
Material	ABS



### **L-PHP50A**

#### ABS Music Horn

- Extraordinary audio performance and music reproduction
- Divided frequency system
- Wide opening angle
- Sturdy ABS enclosure
- CE and RoHS compliant

SPECIFICATIONS	L-PHP50A
Max power	75W
Rated power	50W
Power taps @100V	50W / 25W / 12.5W / 9W / 4.5W / 2.6W / 8Ω
SPL at 50W/1W (200Hz - 15kHz, 1m)	111dB / 96dB
Frequency range (-10dB)	150Hz - 17kHz
Dispersion angle (1KHz/6dB)	70°
Rated input voltage	100V / 70V
Rated impedance	200Ω / 400Ω / 800Ω / 1.1KΩ / 2.2KΩ / 3.9KΩ
Connection	Plastic terminal blocks
Dimensions (Wx H x D)	252 x 362 x 310mm
Weight	4kg
Color	Light grey (RAL 7035)
Material	ABS



## 04

### Projection Loudspeaker

Eligible to various public address applications, projection loudspeaker offers extraordinary audio performance and music reproduction.

