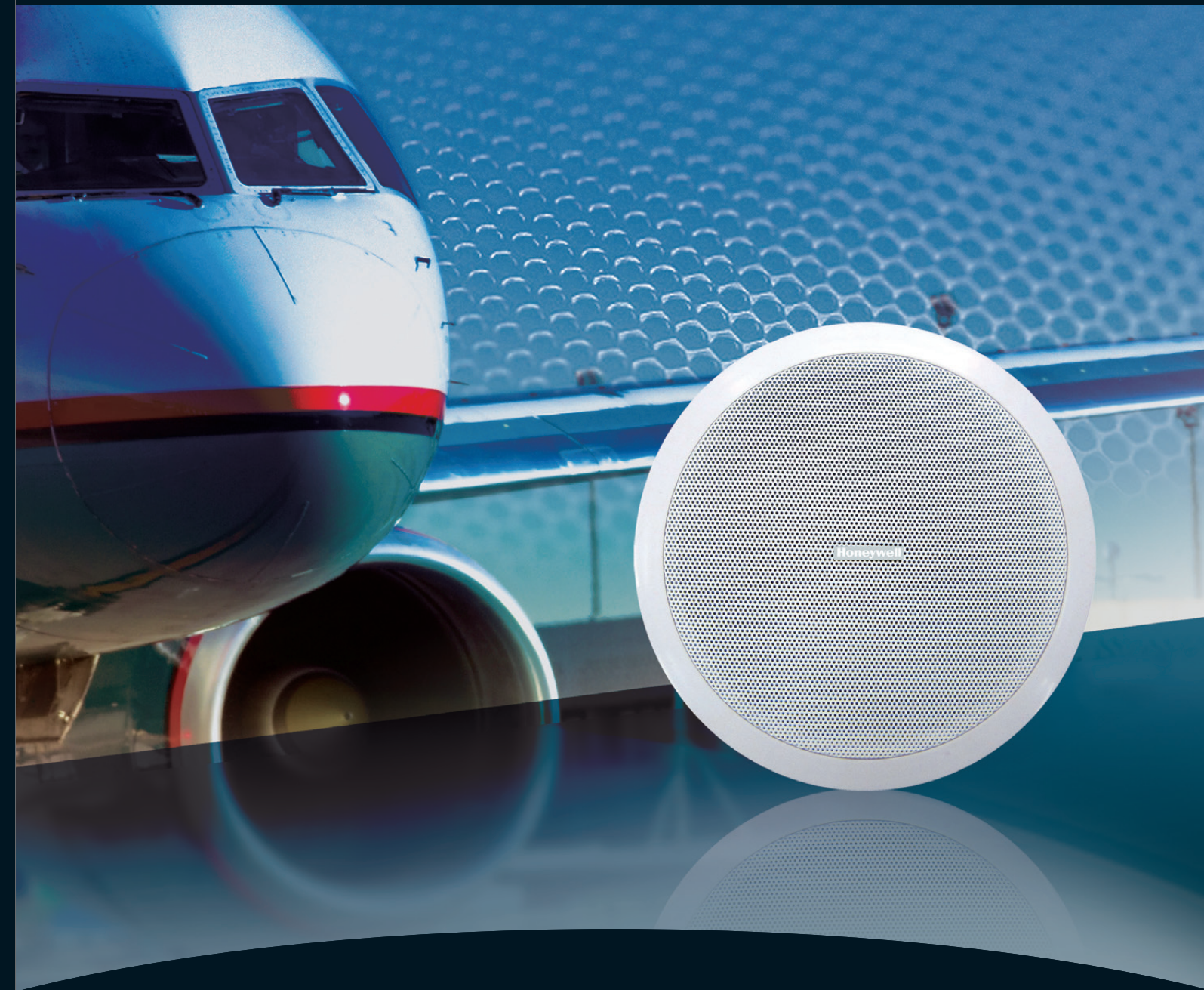


Honeywell Audiovisuals is a strategic business unit of Honeywell Life Safety under global Fortune 500 Honeywell International Inc. Honeywell Audiovisuals is specialized in designing, developing, manufacturing and selling public address and voice alarm systems. Being an expert in acoustic excellence, our mission statement is to provide our customers who need sound and voice propagation a better, safer, and a more efficient public address management system and solution.

As a global leading manufacturer, Honeywell Audiovisuals is always in pursuit of innovations and driven by the most cutting edge technologies. With an experienced team of R&D elites working in world-class laboratories, Honeywell Audiovisuals implements the most efficient operation and strictest quality control system in the industry. Our advanced design concepts focus on networkability, modularization, and user-friendliness. "Empower the Sound" is our promise to create a greater value to our customers around the world.

LEADWAY SERIES

Honeywell



Extend Leadership into Acoustic Excellence

High Quality Loudspeakers for
Public Address and Voice Alarm Systems



Honeywell Audiovisuals
hav.international@honeywell.com

Subject to change without notice
LEADWAYSPK_V4.2_EN
Oct, 2014
© 2014 Honeywell International Inc.

Honeywell

04 Projection Loudspeaker

L-PJM10A L-PJM20A

Aluminum Unidirectional Projection Loudspeaker

- Intelligible voice and superior sound reproduction
- Ceiling or wall mount installation
- Meets virtually any indoor and outdoor requirement
- CE and RoHS compliant

SPECIFICATIONS	L-PJM10A	L-PJM20A
Max power	20W	30W
Rated power	10W	20W
Power taps @ 100V	10W / 5W / 2.5W / 1.25W	20W / 10W / 5W / 2.5W
SPL	at 10W/1W(170Hz - 20kHz,1m) 98dB / 89dB	at 20W/1W(200Hz - 15kHz,1m) 102dB / 90dB
Frequency response (-10dB)	150Hz - 20kHz	150Hz - 20kHz
Dispersion angle (1KHz-6dB)	180°	180°
Rated input voltage	100V / 70V	100V / 70V
Rated impedance	1KΩ / 2KΩ / 4KΩ / 8KΩ	500Ω / 1KΩ / 2KΩ / 4KΩ
Connection	Fire-resistant Cable	Fire-resistant Cable
Dimensions (D x L)	Φ140 x 195mm	Φ140 x 195mm
Weight	2.62kg	2.65kg
Color	White (RAL 9003)	White (RAL 9003)
Material	Aluminum	Aluminum



L-VJM10A/EN(C) L-VJM20A/EN(C)

Aluminum Unidirectional Projection Loudspeaker

- Intelligible voice and superior sound reproduction
- Ceiling or wall mount
- Meets virtually any outdoor requirements
- Complies with IP65 standard
- Complies with EN54-24 standard
- Able with or without capacitor (part number without suffix "C")

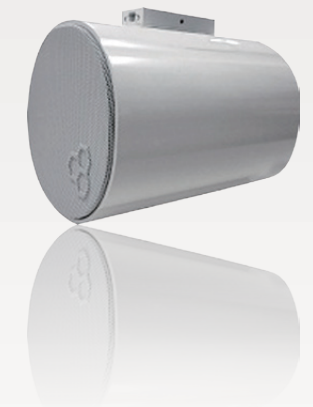
SPECIFICATIONS	L-VJM10A/EN L-VJM10A/EN(C)	L-VJM20A/EN L-VJM20A/EN(C)
Max power	20W	30W
Rated power	10W	20W
Power taps @ 100V	10W / 5W / 2.5W / 1.25W	20W / 10W / 5W / 2.5W
SPL at 10W / 1W (100Hz-10KHz,1m)	98dB / 89dB	101dB / 89dB
SPL at 10W / 1W (100Hz-10KHz,4m)	86dB / 77dB	89dB/77dB
Frequency response (-10dB)	150Hz - 20KHz	150Hz - 20KHz
Rated input voltage	100V / 70V	100V / 70V
Rated impedance	1KΩ / 2KΩ / 4KΩ / 8KΩ	500Ω / 1KΩ / 2KΩ / 4KΩ
Connection	Fire-resistant Cable	Fire-resistant Cable
Dimensions (D x L)	Φ140 x 195mm	Φ140 x 195mm
Weight	2.62kg	2.65kg
Color	White (RAL 9003)	White (RAL 9003)
Material	Aluminum	Aluminum
DC Blocking Capacitor	Yes(2.7uF) L-VJM10A/EN(C) No L-VJM10A/EN	Yes(2.7uF) L-VJM20A/EN(C) No L-VJM20A/EN

L-VBM20A/EN(C)

Aluminum Bidirectional Projection Loudspeaker

- Intelligible voice and superior sound reproduction
- Ceiling or wall mount
- Meets virtually any outdoor requirements
- Complies with IP65 requirements
- Complies with EN54-24 standard
- Able with or without capacitor(part number without suffix "C")

SPECIFICATIONS	L-VBM20A/EN	L-VBM20A/EN(C)
Max power	30W	
Rated power	20W (10W×2)	
Power taps @ 100V	20W / 10W / 5W / 2.5W	
SPL at 20W/1W (100Hz-10KHz,1m)	99dB / 87dB	
SPL at 20W/1W (100Hz-10KHz,4m)	87dB / 75dB	
Frequency response (-10dB)	150Hz - 20KHz	
Rated input voltage	100V / 70V	
Rated impedance	500Ω / 1KΩ / 2KΩ / 4KΩ	
Connection	Fire-resistant Cable	
Dimensions (D x L)	Φ140 x 195mm	
Weight	3.23kg	
Color	White (RAL 9003)	
Material	Aluminum	
DC Blocking Capacitor	Yes(2.7uF) L-VBM20A/EN(C) No L-VBM20A/EN	



L-PBM20A

Aluminum Bidirectional Projection Loudspeaker

- Intelligible voice and superior sound reproduction
- Ceiling or wall mount installation
- Meets virtually any indoor and outdoor requirement
- CE and RoHS compliant

SPECIFICATIONS	L-PBM20A
Max power	30W
Rated power	20W (10W×2)
Power taps @ 100V	20W / 10W / 5W / 2.5W
SPL at 20W/1W (200Hz - 15kHz,1m)	107dB / 95dB
Frequency response (-10dB)	150Hz - 20KHz
Dispersion angle (1KHz-6dB)	180°
Rated input voltage	100V / 70V
Rated impedance	500Ω / 1KΩ / 2KΩ / 4KΩ
Connection	Fire-resistant Cable
Dimensions (D x L)	Φ140 x 195mm
Weight	3.23 kg
Color	White (RAL 9003)
Material	Aluminum

L-PJP20A

ABS Unidirectional Projection Loudspeaker

- Intelligible sound and music reproduction
- Stylish and unobtrusive design
- High impact and fire proof ABS enclosure
- Easy installation and cost effective
- CE and RoHS compliant

SPECIFICATIONS	L-PJP20A
Max power	30W
Rated power	20W
Power taps @ 100V	20W / 10W
Power taps @ 70V	10W / 5W
SPL at 20W/1W (200Hz - 15kHz,1m)	111dB / 91dB
Frequency response (-10dB)	150Hz - 20kHz
Dispersion angle (1KHz-6dB)	120°
Rated input voltage	100V / 70V
Rated impedance	500Ω / 1KΩ
Connection	Cable
Dimensions (D x L)	Φ180mm x 230mm
Weight	2.1kg
Color	White (RAL 9003)
Material	ABS

