

## WIN-PAK®

### Integrated Security Software



Honeywell's WIN-PAK® software suite provides a range of solutions from access control only to fully integrated security solutions. WIN-PAK's powerful user interface allows dealers to install a single software for all of their customers' security needs.

- **WIN-PAK XE 4.0 (Express Edition)** is the baseline software package for access control only. Manage NetAXS and NS2/NS2P controllers from a single workstation. WIN-PAK XE is ideal for single workstation systems that require access only functionality.
- **WIN-PAK SE 4.0 (Standard Edition)** is the software package for access control and standard video integration. The add-on VISTA® intrusion module can further enhance the integration solution. WIN-PAK SE 4.0 is ideal for small to medium integrated security applications and is available in 1 or 5 workstation versions.
- **WIN-PAK PE 4.0 (Professional Edition)** combines all the features of XE and SE plus an unrestricted number of client workstations; VISTA intrusion and advanced video integration; support for multiple department/site applications; multiple communication servers for large applications. All inclusive—no additional upgrades needed.

WIN-PAK optimizes system performance and total cost of ownership by supporting multiple Honeywell platforms—including access control, video surveillance and intrusion—from a single user interface. The benefit is seamless integration that offers a common look and feel for access control hardware as well as video and intrusion solutions. Functions that have traditionally been tied together with physical relays and input devices are now controlled logically providing greater ease and flexibility in managing your system. This level of integration removes multiple software platforms

and interfaces, and is an improvement over a typical non-integrated solution where devices are not aware of what other devices are doing. Reducing the total cost of ownership is always at the forefront of Honeywell products. Unlike other software manufacturers, Honeywell's WIN-PAK does not charge license fees per reader which saves users money.

Quick start wizards make WIN-PAK easy to install and program. Context-sensitive help provides instant information on the screen function you are looking at leading to quick answers to common questions. WIN-PAK's intrusion integration provides a virtual keypad making it ideal for managing and monitoring remote sites from a single location. WIN-PAK simplifies the access control process and prevents false alarms by allowing supervisors to arm or disarm the system with any valid card. It also offers video integration directly from the user interface, no longer requiring relays and costly wire runs to trigger event recording. WIN-PAK's video interface provides robust functionality with intuitive design. Video integration allows the operator to choose which events trigger live camera pop-ups such as video motion, power loss on access panel or invalid PIN number entered; view stored video based on filters of past events. Advanced video integration (WIN-PAK PE 4.0) adds the ability to choose which camera presets should be used for up to four cameras per event, providing multiple angles to catch all the details. WIN-PAK offers advanced reporting capabilities that customers are demanding, users can create customized reports or choose from a variety of predefined reports that can be emailed or exported. Whether you require a simple or comprehensive security solution, WIN-PAK is the right choice for now and the future.

## FEATURES

### WIN-PAK XE

- Manage cardholders across multiple sites
- Quick start setup and configuration wizards
- Real-time access event monitoring
- Control and response, including acknowledge, clear and annotate
- Tracking and muster view/report
- Guard tour by point or card read
- Manual override of system functions and schedules
- Door modes: Lockout, Lockdown, PIN Only, Card+PIN, Card or PIN, Card Only
- Advanced reporting functionality
- Predefined or customized reports
- Schedule email of predefined reports
- Export in HTML or delimited format
- Elevator call and control
- Anti-passback processing
- Hard or Soft per reader
- Learn mode override

- Context-sensitive help
- Dynamic floor plans
- Control access devices
- Floor plan linking
- Card numbers to 20 digits
- Toggle lock during unlock schedule - lunch hour mode
- Toggle lock outside of schedule - after hours meeting mode
- Card database lookup
- User defined procedures per event/schedule
- 3-Holiday types
- ID badging standard
- Prioritized Alarm Events

### WIN-PAK SE 4.0 / WIN-PAK PE 4.0

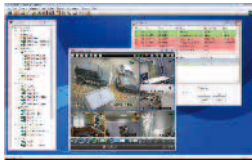
- Includes all features from WIN-PAK XE
- 1, 5 or unrestricted number of workstations
- 1 or 50 accounts

- Integrate access control, digital video and intrusion
- Arm or disarm per card read
- Record and playback access, intrusion or video events and alarms
- Define up to four PTZ cameras to respond per event (PE 4.0 only)
- Alarm video popup and user verification
- Synchronized video playback with access, intrusion or video events
- Define and extract video clips
- Real-time intrusion, access and video event monitoring
- includes live and recorded video
- Manual override of system functions and schedules
- Arm/disarm partitions and zone
- Bypass/un-bypass zones
- Dynamic floor plans
- Control access, intrusion and video devices

# WIN-PAK®

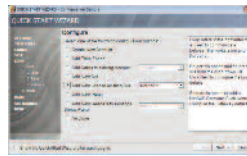
## INTEGRATION CAPABILITIES

### BENEFITS



#### Seamless Integration

WIN-PAK brings together Honeywell's access control system, HUS Smart IP Surveillance Management System, VISTA® intrusion control panel, Rapid Eye™ Multi-Media Series, MAXPRO® NVR XE/SE, Fusion Series and HRDP Series DVR systems. The seamless integration of these systems under WIN-PAK provides a common look and feel throughout. This eliminates the confusion and compatibility issues brought on by different systems from many manufacturers.



#### Fast and Easy Setup

Setup is quick and easy using quick start wizards. Wizards make programming simple by taking users step-by-step through basic installation and programming. Context-sensitive help is available anywhere in the program by pressing F1.



#### Increased Intrusion Function

Add WIN-PAK to an existing VISTA-128BPT, VISTA-250BPT, VISTA-128FBP or VISTA-250FBP installation and disarm partitions from a single valid card read or arm partitions by presenting the card three times to the reader; manage and monitor the intrusion system from the virtual keypad; assign user codes to cardholders; monitor and control points from a floor plan; generate customized reports for intrusion events and user actions, real-time event and alarm reporting, and more. Integration is included with WIN-PAK XE 4.0, WIN-PAK PE 4.0 – optional for WIN-PAK SE 4.0.



#### Enhanced Security

Integration to Honeywell's video products provides flexibility to match the right hardware to each application and provide camera popup on alarm and system events, video clip retrieval; PTZ and preset control. Advanced video integration (WIN-PAK PE 4.0 only) allows up to four cameras to be called per event type (depending on selected DVR); calls cameras to go to preset; defines if manual PTZ override is allowed during the event; and record instant, intensive or custom per camera. Access, intrusion and video events notify the operator, alerting users to view live video or easily retrieve video playback.



#### No Need to Retrain

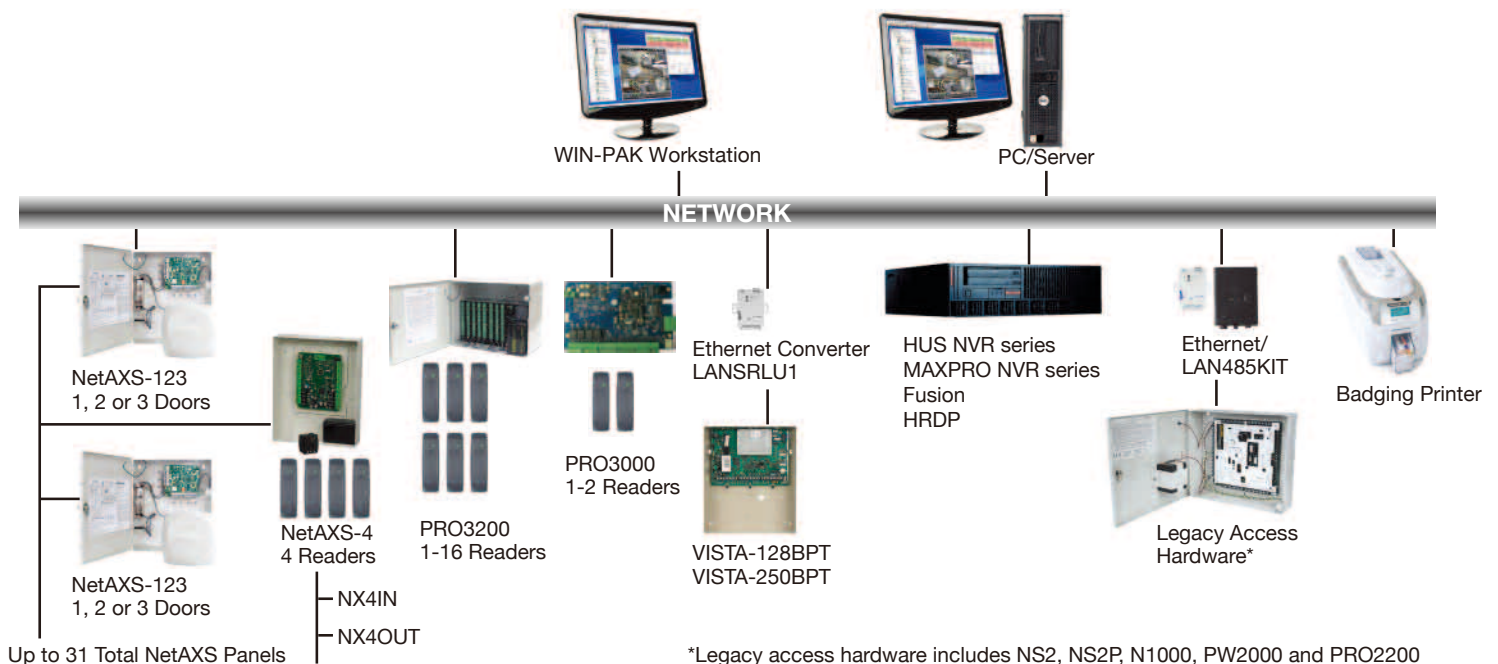
WIN-PAK integrates with Honeywell products that have been trusted by customers for years. WIN-PAK, VISTA, Rapid Eye, Fusion and HRDP provide a familiar look and feel to existing installations and require little or no additional time for installation and programming.



#### Reduce False Alarms, Unauthorized Access

WIN-PAK SE 4.0 with VISTA integration option (standard with WIN-PAK PE 4.0) reduces unwanted alarms caused by improper keypad operation, incorrect codes or unauthorized access to sensitive areas. Reports can be generated to help businesses improve on their operating efficiencies.

### CONFIGURATION



# WIN-PAK®

## INTEGRATION CAPABILITIES

### INTEGRATION CAPABILITIES

Honeywell's innovative WIN-PAK® with video and intrusion integration combines the three most common security requirements from customers together under one common user interface. Ownership costs associated with training, maintenance and the ability to make system changes on the fly are reduced. Integration is achieved in the software, so there are no interruptions to the workplace caused by hardware and wire installations.

#### Key Integration Features

- Grant access and disarm system on valid card read
- Arm system on valid triple card read
- View live video from up to 16 cameras simultaneously
- Valid/invalid cardholder verification
- Arm/disarm video verification
- Pop-up video on access or intrusion function
- Virtual alarm touchpad
  - View intrusion control panel status
  - VISTA® keypad control through WIN-PAK software
- Live system control
  - Arm/disarm intrusion system
  - Multiple partition control
  - Bypass/unbypass doors
  - Live camera view, including PTZ
- Define up to four different camera and presets per event type (WIN-PAK PE 4.0).

#### Key Integration Benefits

- Save time and money by managing three separate systems with one easy-to-use software interface.
- Improve the level of security by eliminating use of keys or user code sharing. Increase security by using a unique card to disarm a system and grant access at the door.
- WIN-PAK software interface allows users to retrieve and play back alarms associated with intrusion and access control.
- Automated reporting allows users to send up-to-date reports on intrusion and access events hourly, daily, weekly or monthly.
- Reduce employee down-time by only requiring training on one system.
- Expand to meet current and future needs. Start with access and add video or intrusion later as requirements change.

#### Typical Applications

- Office buildings
- Warehouses
- Convenience stores
- Daycare centers
- Schools/universities
- Retail establishments
- Pharmacies
- Hospitals/medical offices
- Light industrial
- Restaurants

### SUPPORTED INTEGRATION DEVICES



\*WIN-PAK XE supports NetAXS-123, NetAXS-4, NS2 and NS2P only. WIN-PAK XE does not support N-1000, PRO2200, PRO3000

# WIN-PAK®

## INTEGRATION CAPABILITIES

## CLASSIFICATIONS

### WIN-PAK®

	XE Express Edition	SE Standard Edition		PE Professional Edition
	WIN-PAK Access only (supports NetAXS, NS2 and NS2P only)	WIN-PAK Access + Video	WIN-PAK Access + Video + Intrusion	WIN-PAK + Intrusion + Advanced Video
Key Features	Customer wants to: <ul style="list-style-type: none"> <li>Automatically restrict unauthorized personnel from entering a facility while controlling authorized personnel</li> <li>Track: WHO can go, WHERE they can go and WHEN they can go</li> <li>Prioritized Alarm View and Floor Plan links</li> <li>Create and manage photo ID badges</li> <li>Schedule/email reports</li> <li>Email events</li> <li>Change/deactivate card based on lack of use (use it or lose it)</li> <li>Different card types: VIP, Supervisor, Standard and Limited Use (requires NetAXS)</li> <li>Elevator control</li> <li>Event scripts (command files)</li> </ul>	WIN-PAK XE features, plus: <ul style="list-style-type: none"> <li>Integrate video and access system events for VIDEO verification</li> <li>Extract and save video clips</li> <li>Floor plan integration of access and video</li> <li>Manage the system from more than one workstation</li> </ul>	In addition to access control and video management the customer wants to: <ul style="list-style-type: none"> <li>Arm/disarm with a card read</li> <li>Require a supervisor to present a card to arm/disarm (requires NetAXS) – normal cards are not allowed entry while intrusion is armed</li> <li>Monitor intrusion events with video integration for video confirmation</li> <li>Floor plan integration of intrusion, access and video</li> <li>See the status of the intrusion systems and have basic control via the virtual keypad</li> </ul>	In addition to access control and intrusion integration, advanced video integration allows you to define each event type: <ul style="list-style-type: none"> <li>Select up to four cameras to automatically pop up per event type</li> <li>Define PTZ presets per event type</li> <li>Select instant or intensive pre-defined record rates</li> <li>Program custom record rates</li> <li>Definable go to home delay – record event for defined time and then define when the camera returns to the home position</li> <li>Define if manual PTZ is allowed during event</li> </ul>
Work-Station	1	1 or 5		Unlimited
Accounts	1	1		More than 50 accounts for PE
Photo ID Badging	✓	✓		✓
Video Integration	--	✓		✓
VISTA Panel Support	--	✓		✓
Advanced Video	--	--		✓
Supported Access Control Panels	NetAXS	NetAXS, PRO2200, PRO3000		NetAXS, PRO2200, PRO3000
Legacy Access Control Panels	NS2	NS2, N-1000		NS2, N-1000

## WIN-PAK®

### Integrated Security Software

## ORDERING

WIN-PAK XE 4.0 Software	
WPX4	WIN-PAK XE 4.0 Access Control Software, Single User
WIN-PAK SE 4.0 Software	
WPS43	WIN-PAK SE 4.0 Access Control Software, Single User
WPS4V3	WIN-PAK SE 4.0, Single user, with VISTA integration
WPS4U53	WIN-PAK SE 4.0 Software, 5-User
WPS4U5V3	WIN-PAK SE 4.0, 5-User and VISTA integration
WIN-PAK SE 4.0 Software Upgrades	
USXS4	Upgrade from WIN-PAK SE 3.0 (WPS33) to WIN-PAK SE 4.0. Same options and users as WIN-PAK SE 3.0.
US4S4V3	Upgrade from WIN-PAK SE 4.0 Single user (WPS43) to WIN-PAK SE 4.0 Single user with VISTA (WPS4V3)
US4S4U53	Upgrade from WIN-PAK SE 4.0 Single user (WPS43) to WIN-PAK SE 4.0 Five user (WPS4U53)
US4S45V3	Upgrade from WIN-PAK SE 4.0 Single user (WPS43) to WIN-PAK SE 4.0 Five user with VISTA (WPS4U5V3)
US4VS45V3	Upgrade from WIN-PAK SE 4.0 Single user with VISTA (WPS4V3) to WIN-PAK SE 4.0 Five user with VISTA (WPS4U5V3)
US45S45V3	Upgrade from WIN-PAK SE 4.0 Five user (WPS4U53) to WIN-PAK SE 4.0 Five user with VISTA (WPS4U5V3)
WIN-PAK PE 4.0 Software	
WPP43	WIN-PAK PE 4.0, unlimited users + Advanced Video Integration and VISTA Intrusion integration
WIN-PAK PE Software Upgrades	
UPP4	Upgrade from WIN-PAK PE 3.0 (WPP33) to WIN-PAK PE 4.0 (WPP43)
US4P43	Upgrade from WIN-PAK SE 4.0 Single user (WPS43) to WIN-PAK PE 4.0 (WPP43)
US45P43	Upgrade from WIN-PAK SE 4.0 Five user (WPSU543) to WIN-PAK PE 4.0 (WPP43)

WIN-PAK® and VISTA® are registered trademarks of Honeywell International Inc.

Microsoft®, Windows® Server 2012, Windows® Server 2008, Windows 8, Windows 7, and SQL Server are registered trademarks of Microsoft Corporation

### COMPUTER REQUIREMENTS

The following are the hardware and software requirements to install WIN-PAK on your computer:

- **Minimum:** Stand-alone computer that supports 1 to 10 readers, 250 cards (access only – no video integration)
- **Recommended Server:** Computer that supports 1 to 100 readers, 5,000 cards, OS licensed per the number of workstations needed and communication ports per your application
- **Performance:** Supports more than 100 readers, 50,000+ cards, 150,000 events per day
- **Supported OS:** 64-bit and 32-bit supported operating systems: Windows® 8.1, Windows 8, Windows 7 Professional, Windows 7 Ultimate, Windows Server 2012 R2, Windows Server 2012, Windows Server 2008 R2. Qualified for use with VMware vSphere® 5.1.

	Minimum (No video integration)	Minimum/Workstation	Recommended	Performance
<b>Operating System</b>	Windows 7 32-bit (no video integration)	Windows 7 Professional	Windows Server 2012 R	Windows Server 2012 R2
<b>Database</b>	SQL Server SQL Server 2012 Express (included)	SQL Server 2012 Express (included)	SQL Server 2012 Express (included)	SQL Server 2012 with processor license recommended
<b>Processor</b>	Intel® Core i3-3220 Processor	Intel® Core™ i5 2400	Intel® Xeon® E5600 series	Intel® Xeon® X5600 series
<b>CPU</b>	2 GHz	3.1 GHz	2.4 GHz	2.8 GHz
<b>RAM</b>	4 GB	4 GB	8 GB	16 GB
<b>Hard Disk</b>	80 GB STATA with minimum 5 GB free	80 GB STATA with minimum 5 GB free	250 GB STATA or SCSI	1 TB 7.2k RPM or better drives configured as: OS on RAID1; DB RAID 1+0 (4-disk)
<b>Video Card</b>	No video integration – Standard video card	1x512 MB PCIe x16**	1x512 MB PCIe x16**	1x512 MB PCIe x16**

Consult factory for other advanced applications

\*\*Recommended video card for video integration is NVIDIA Quadro NVS 300 - 1x512 MB PCIe x16 or similar

# WIN-PAK<sup>®</sup>

Integrated Security Software

---

For more information:

Security Asia Pacific Headquarters  
Security Australia Sales Hotline  
Security China Sales Hotline  
Security Hong Kong  
Security India

Tel: (86) 21 2219 6888  
Tel: 1300 234 234  
Tel: 400-8800-330  
Tel: (852) 2405 2323  
Tel: (91) 124 497 5000

Security Indonesia  
Security Korea  
Security Singapore  
Security Taiwan  
Security Thailand

Tel: (62 21) 536 52322  
Tel: (82) 2 799 6114  
Tel: (65) 6355 2828  
Tel: (886) 2 2245 1000  
Tel: (66) 2 693 3099

[www.asia.security.honeywell.com](http://www.asia.security.honeywell.com)  
[security.ap@honeywell.com](mailto:security.ap@honeywell.com)

**Honeywell Security Group**  
Automation & Control Solutions  
Honeywell International Inc.  
[www.security.honeywell.com](http://www.security.honeywell.com)

Apr 2014  
© 2014 Honeywell International Inc.

**Honeywell**